



## Quick Install Guide

Firstly thank you for buying the Toroblue software, we hope it will prove itself to be your most successful marketing decision.

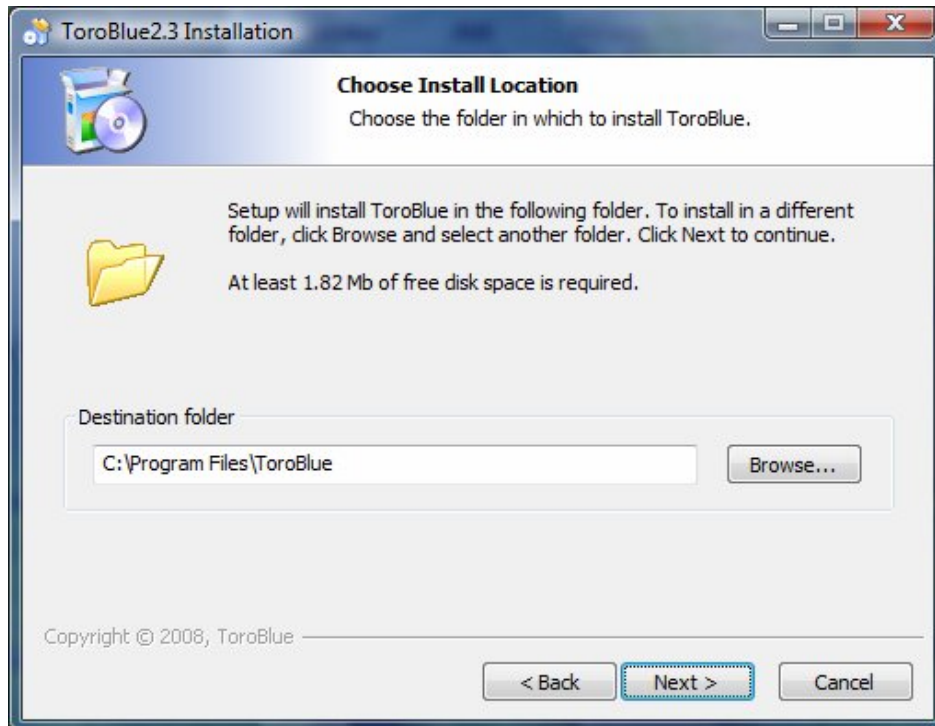
The product consists of two items

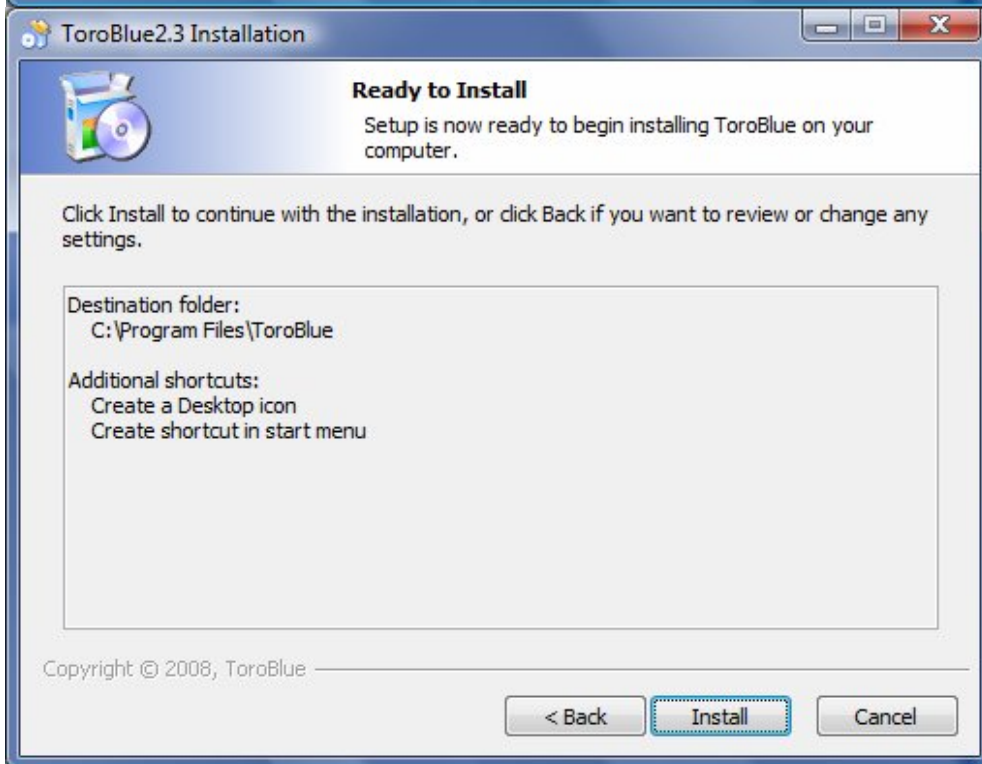
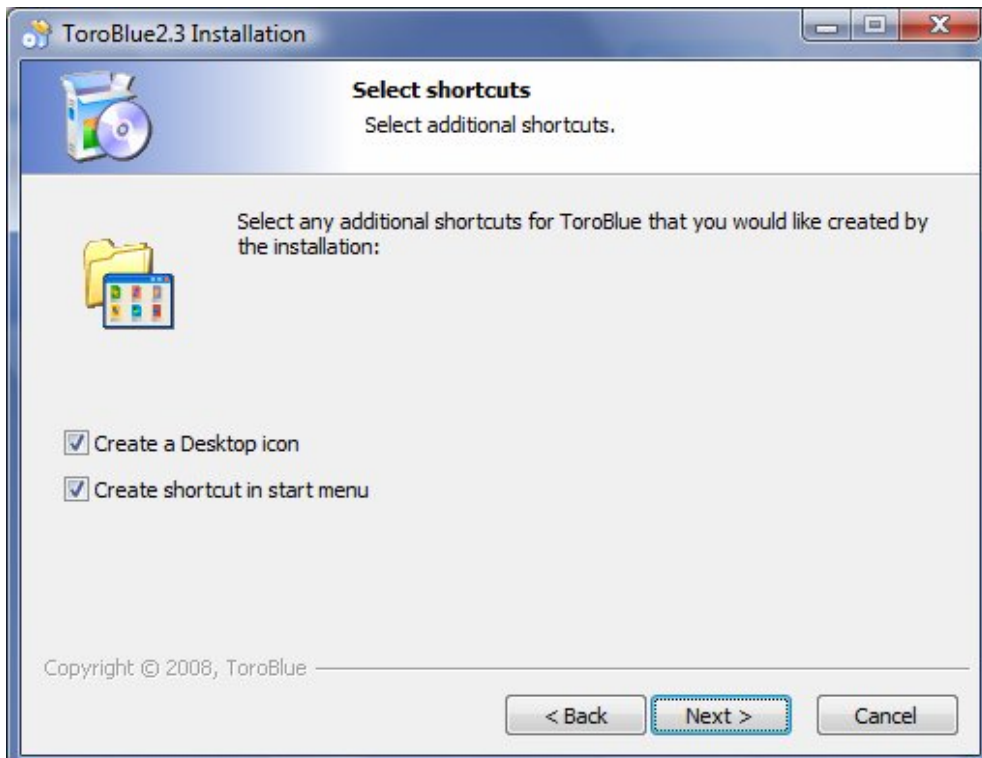
1. The USB Bluetooth 'dongle'
2. A CD with the Toroblue software on it.

To set up the Product please insert the USB Bluetooth dongle into the PC/laptop that you want to run the software from.

In most cases the dongle will auto-load and so you will not need to do anything apart from authorise the installation, if the computer asks for a driver or installation software then please insert the CD that comes with the USB Bluetooth dongle and select the appropriate driver that matches your operating system e.g. for Vista or XP.

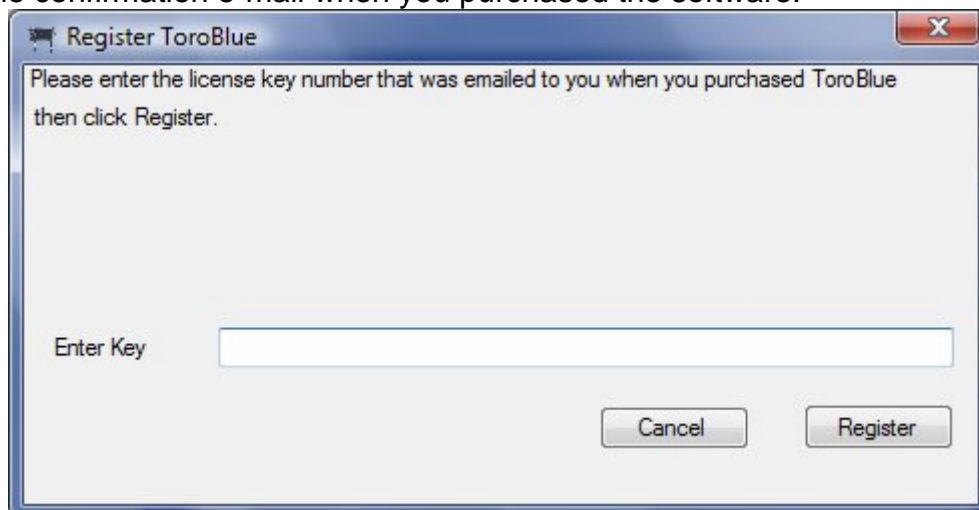
Once this is done and with the USB Bluetooth dongle plugged in to a USB port, please insert the Toroblue CD. This will auto run and setup will begin once you have given permission.







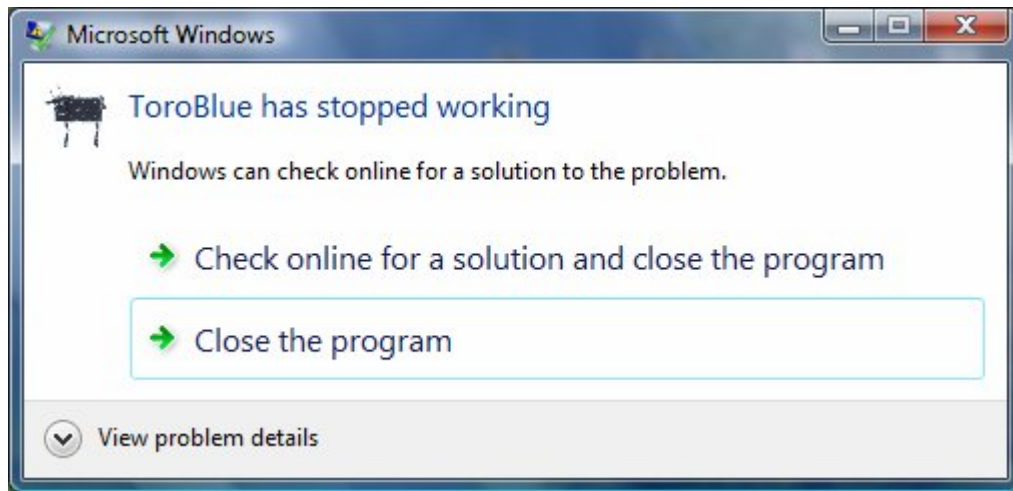
Once setup is complete please press 'finish' and Toroblue will close and then another box will open when you should enter your licence key. This was given in the confirmation e-mail when you purchased the software.



Click 'Register' and in a few moments your product will be registered.  
- An internet connection is needed for this process and potentially some firewalls will need to be temporarily turned off or be given permission to allow Toroblue to connect to the internet.

- If you cannot find your key then please contact our support ([support@toroblue.com](mailto:support@toroblue.com)) with your worldpay ID and we will be able to give you your key again.

If using Vista there may be a box that appears that reads 'Toroblue has stopped working properly'. This is expected as it is just the computer warning you when a program automatically closes without any action for you.



From here you're then ready to go.  
Click on the Toroblue icon loaded onto the desktop and the program will open.